



FOR
LEASE

THE DEVON BUILDING GATEWAY CENTRE

2101 GATEWAY CENTRE BOULEVARD :: MORRISVILLE, NC

NOW AVAILABLE

SUITE 104 - 4,665 RSF



LOBBY



**FOR MORE
INFORMATION
PLEASE
CONTACT**

FEATURES:

- Class A Office space
- Built in 2002
- 25,000 SF Building
- Centrally located along the I-40 Corridor with easy access to RDU Airport and the Research Triangle Park
- Across Aviation Parkway from Lake Crabtree Park
- \$18.50 / SF Full Service

Don Shupe

Vice President
919.831.8216
don.shupe@cbre.com

CBRE
CB RICHARD ELLIS

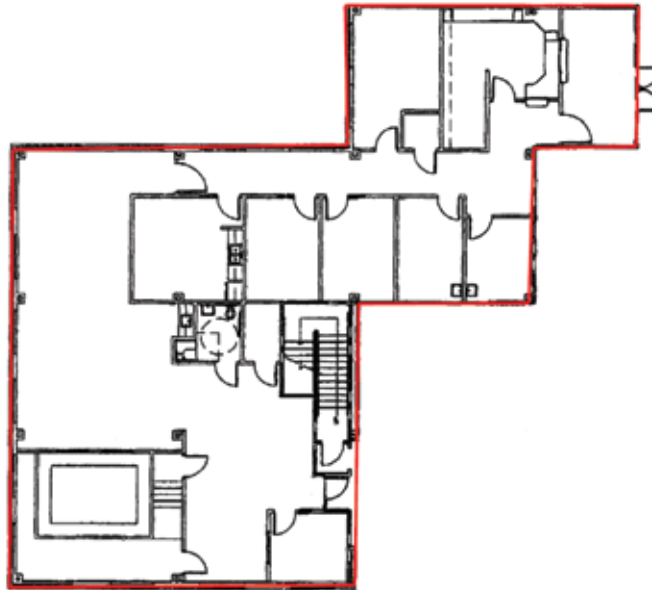
FOR
LEASE

THE DEVON BUILDING

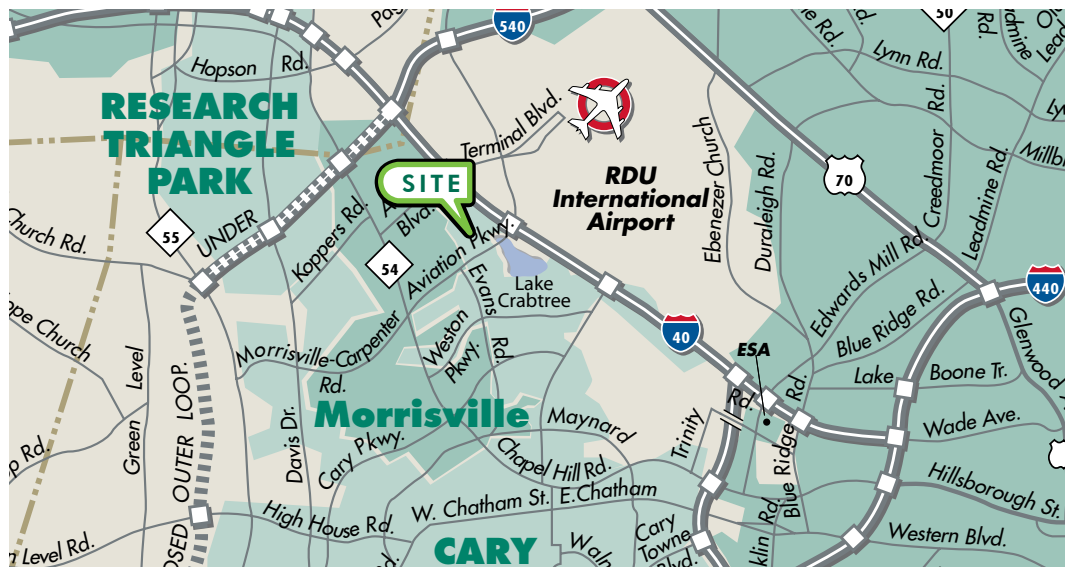
**2101
GATEWAY CENTRE
BOULEVARD**

MORRISVILLE, NORTH CAROLINA

SUITE 104
4,665 RSF



LOCATION
MAP



FOR MORE
INFORMATION
PLEASE
CONTACT

Don Shupe

Vice President

919.831.8216

don.shupe@cbre.com

www.cbre.com/devon

CB Richard Ellis | 6501 Weston Parkway. | Suite 190 | Cary, NC 27513 | www.cbre.com/raleigh

©2009 CB Richard Ellis, Inc. The information above has been obtained from sources believed reliable. While we do not doubt its accuracy, we have not verified it and make no guarantee, warranty or representation about it. It is your responsibility to independently confirm its accuracy and completeness.

CBRE
CB RICHARD ELLIS